

GN 275-NI | Pivoting connecting clamps

Stainless steel



- 1
- 2
- 3
- 4
- 5
- 6
- 7
- 8
- 9
- 10
- 11
- 12
- 13
- 14
- 15
- 16
- 17
- 18

MATERIAL

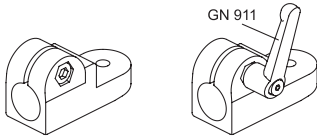
Cast AISI CF-8 stainless steel, sandblasted matte finish.
AISI 304 stainless steel screw and nut.

FEATURES AND APPLICATIONS

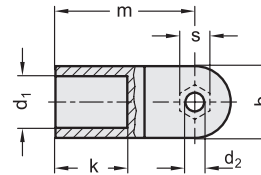
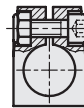
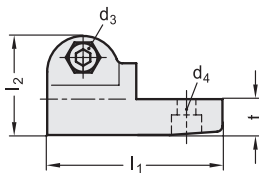
The assembly hole of GN 275-NI connecting clamps allows an excellent match with tubes GN 990 (see page 1778).

GN 275-NI connecting clamps can be assembled with connecting clamps GN 271-NI (see page 1751), GN 273-NI (see page 1753) or GN 277-NI (see page 1757).

The clamping screw d3 may be replaced by clamping kit GN 911 (see page 1782).



Conversion Table	
1 mm = 0,039 inch	
d1	
mm	inch
12	0.47
14	0.55
15	0.59
16	0.63
18	0.71
20	0.79



INOX STAINLESS STEEL **METRIC**

Code	Description	b	d1	d2	d3	d4	k	l1	l2	m	t	s	d3 Clamping kit	
GN.59013	GN 275-B12-2-NI	25	12	6.5	M6	M6	25	61	34.5	48.5	12.5	10	GN 911-M6-22	180
GN.59033	GN 275-B14-2-NI	25	14	6.5	M6	M6	25	61	34.5	48.5	12.5	10	GN 911-M6-22	173
GN.59043	GN 275-B15-2-NI	25	15	6.5	M6	M6	25	61	34.5	48.5	12.5	10	GN 911-M6-22	169
GN.59053	GN 275-B16-2-NI	25	16	6.5	M6	M6	25	61	34.5	48.5	12.5	10	GN 911-M6-22	163
GN.59073	GN 275-B18-2-NI	25	18	6.5	M6	M6	25	61	34.5	48.5	12.5	10	GN 911-M6-22	154
GN.59083	GN 275-B20-2-NI	25	20	6.5	M6	M6	25	61	34.5	48.5	12.5	10	GN 911-M6-22	141

Connecting clamps